

RDRC-T24FZ-LR-SMA/CA
Wireless Relay Control in 2.4 GHz
User Manual

Reindeer Technologies Pvt Ltd

Excellence through Innovation

S-2, Old No. 15, New No. 31
Rajamannar Street, T Nagar,
Chennai – 600017
India.

Document Revision History

Revision No.	Date	Description/Changes
1.0	26/2/2011	Initial Release

Table of Contents

1 OVERVIEW	4
2 FEATURES.....	4
3 APPLICATIONS.....	5
4 CONNECTION DETAILS.....	5
5 THEORY OF OPERATION	6
5.1 CONTROL UNIT.....	6
5.2 RELAY UNIT	6
6 ELECTRICAL SPECIFICATIONS	7
7. ORDERING INFORMATION	7
8. CONTACT US	8
8.1 TECHNICAL SUPPORT	8
8.2 SALES SUPPORT	8

1 Overview

The RDRC-T24FZ-LR-SMA/CA is capable of covering a range of 1000 meters with error free operation. It operates in 2.4 GHz frequency band. It consists of a control unit and a relay unit. The control unit requires 3.6V DC for operation, while the relay unit requires a 12V DC supply. The battery life in the control unit can come up to 1-year as the unit will be in sleep mode when not in operation. The relay unit can be used to drive any kind of AC or DC circuits or devices that can take up to 7 Amps load. The CSMA-CA protocol has been implemented in RDRC-T24FZ-LR-SMA/CA which avoids false triggering and collisions among the devices operating in the same frequency. The transmit/receive loop is complete with the control unit receiving the acknowledgement from the relay unit for all successful transmissions.

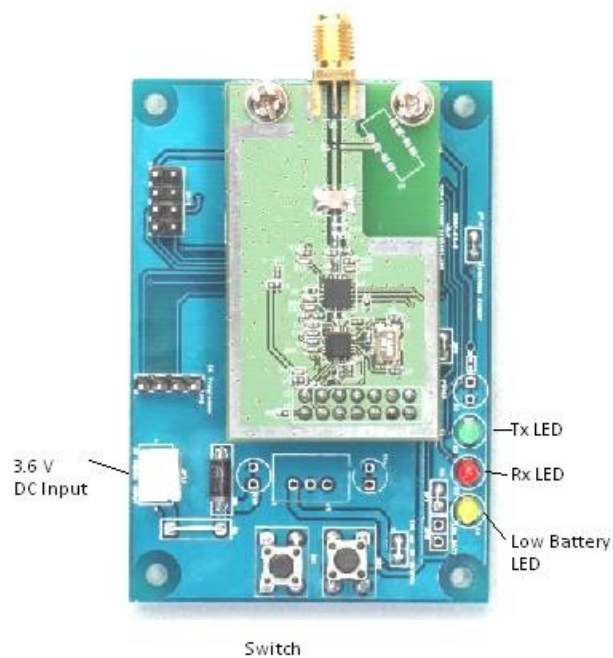
2 Features

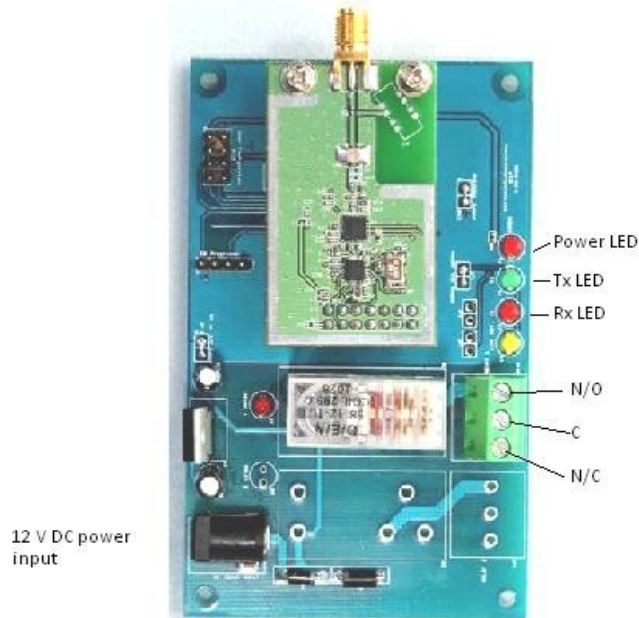
- Covers from 100 meters to around a range of 1000 meters line of sight.
- Longer distances can be achieved using high gain directional antenna.
- Can be used to operate any AC or DC devices up to 7A load.
- Completely customizable control and relay unit in terms of switch operations.
- CSMA-CA protocol to avoid false triggers and collisions.
- Return acknowledgement can be received at the control unit.
- Additional four I/O line's are available which allows us to do customizations upon user request.

3 Applications

- Wireless switches and remotes
- Remote control / security systems
- Keyless entry
- Home and industrial automation
- Process and building control
- Automotive systems

4 Connection Details





5 Theory of operation

The RDRC-T24FZ-LR-SMA/CA has two different Components.

- 1) Control Unit
- 2) Relay Unit

5.1 Control Unit

This unit consists of the ON-OFF switches and the RF module. The unit should be powered using a 3.6V dc power supply. This unit by default will be in sleep mode. When any of the switches is pressed the corresponding data is transmitted. The transmission is indicated by the blinking of the Transmit LED. And after reception of the acknowledgement the Receive LED will blink. The unit then goes back to sleep mode. The battery Low indication LED will blink in case of low battery.

5.2 Relay Unit

This unit consists of the relay and the RF module. When data is received from the control unit, this unit will switch on or off the relay depending on the data. The reception of data is indicated by the blinking of the Receive LED. When a valid data is received this unit will transmit back the acknowledgement, which is indicated by the blinking of the Transmit Led. The Relay ON/OFF LED indicates the state of the relay, whether it is in ON position or in OFF position. This unit is should be powered by 12V DC power supply.

6 Electrical Specifications

Control Unit:

Parameter	Min	Max	Unit
Vcc – Power Supply		3.6	V DC
Operating temperature	-40	+85	°C
RF Output Power		+20	dBm
Frequency of operation		2.4	GHz
Transmit Current		90	mA
Sleep Current		0.002	mA

Relay Unit:

Parameter	Min	Max	Unit
Vcc – Power Supply		12	V
Operating temperature	-40	+85	°C
RF Output Power		+20	dBm
Frequency of operation		2.4	GHz
Operating Current (Relay OFF)		32	mA
Operating Current (Relay ON)		75	mA

7. Ordering Information

Product part Number	Description
RDRC-T24FZ-LR-SMA	Relay Control unit in 2.4 GHz with External Antenna
RDRC-T24FZ-LR-CA	Relay Control unit in 2.4 GHz with Internal Antenna

8. Contact Us

8.1 Technical Support

Reindeer Technologies Pvt Ltd has built a solid technical support infrastructure so that you can get answers to your questions when you need them.

Our technical support engineers are available Mon-Fri between 9:30 am and 6:00 pm Indian standard time. The best way to reach a technical support engineer is to send an email to support@reindeersystems.com. E-mail support requests are given priority because we can handle them more efficiently than phone support requests.

8.2 Sales Support

Our sales department can be reached via e-mail at sales@reindeersystems.com or by phone at 91-44-45022335/42606907.

Our sales department is available Mon-Fri between 9:30 am and 6:00 pm.

Reindeer Technologies Pvt Ltd

Excellence Through Innovation

S-2, Old No. 15, New No. 31
Rajamannar Street, T Nagar,
Chennai – 600017
India.

Phone: 91-44-45022335, 91-44-42606907

Fax: 91-44-28154148

Website: www.reindeersystems.com